

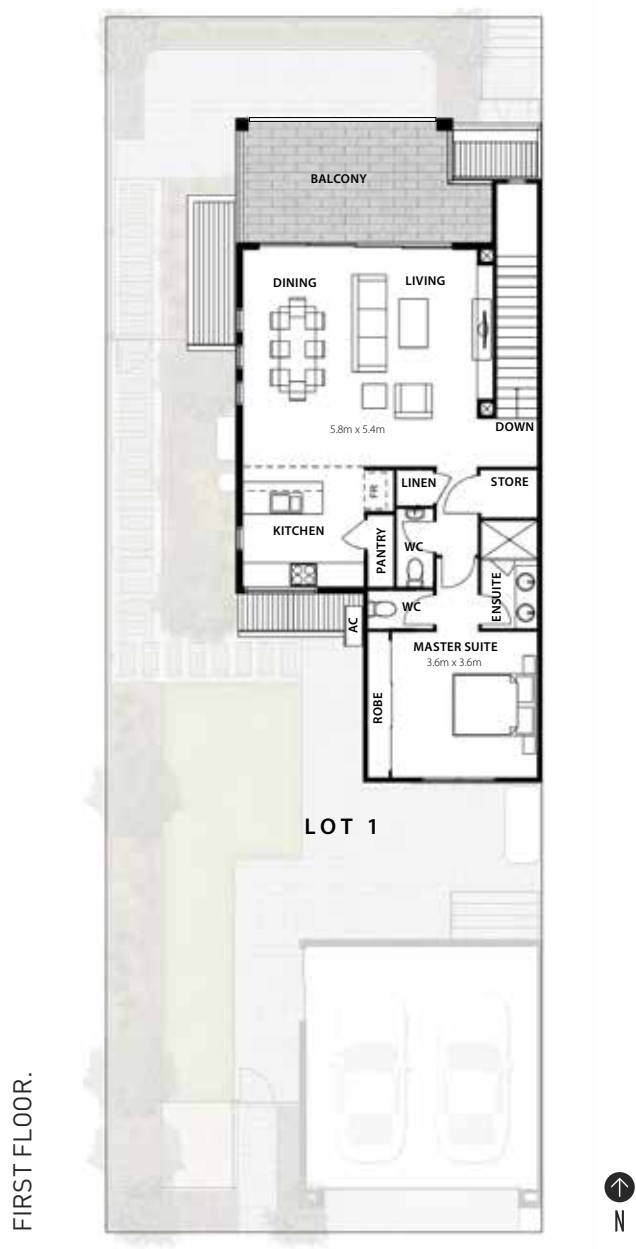
LOT ONE.

4 🚗 2 🚿 2 🚗

The Point Luxury Townhomes boast luxury living and contemporary design while retaining a sense of comfort.

Featuring a North facing aspect, these luxury Townhomes include two living areas, a large waterfront balcony, lock up garage and landscaped gardens.

Open living spaces are enhanced by raised ceilings and expansive windows directly overlooking the majestic waterway. Warm timber tones, quality carpet and premium ceramic tiling with a choice of interior colour scheme complete this stylish package.



FOR MORE INFORMATION VISIT THEPOINTPOINTLONSDALE.COM.AU/TOWNHOMES

LOT TWO.

3 🚗 2 🚿 2 🚗

The Point Luxury Townhomes boast luxury living and contemporary design while retaining a sense of comfort.

Featuring a North facing aspect, these luxury Townhomes include two living areas, a large waterfront balcony, lock up garage and landscaped gardens.

Open living spaces are enhanced by raised ceilings and expansive windows directly overlooking the majestic waterway. Warm timber tones, quality carpet and premium ceramic tiling with a choice of interior colour scheme complete this stylish package.



FOR MORE INFORMATION VISIT THEPOINTPOINTLONSDALE.COM.AU/TOWNHOMES

LOT THREE.

3 🚗 2 🚿 2 🚗

The Point Luxury Townhomes boast luxury living and contemporary design while retaining a sense of comfort.

Featuring a North facing aspect, these luxury Townhomes include two living areas, a large waterfront balcony, lock up garage and landscaped gardens.

Open living spaces are enhanced by raised ceilings and expansive windows directly overlooking the majestic waterway. Warm timber tones, quality carpet and premium ceramic tiling with a choice of interior colour scheme complete this stylish package.



FOR MORE INFORMATION VISIT THEPOINTPOINTLONSDALE.COM.AU/TOWNHOMES